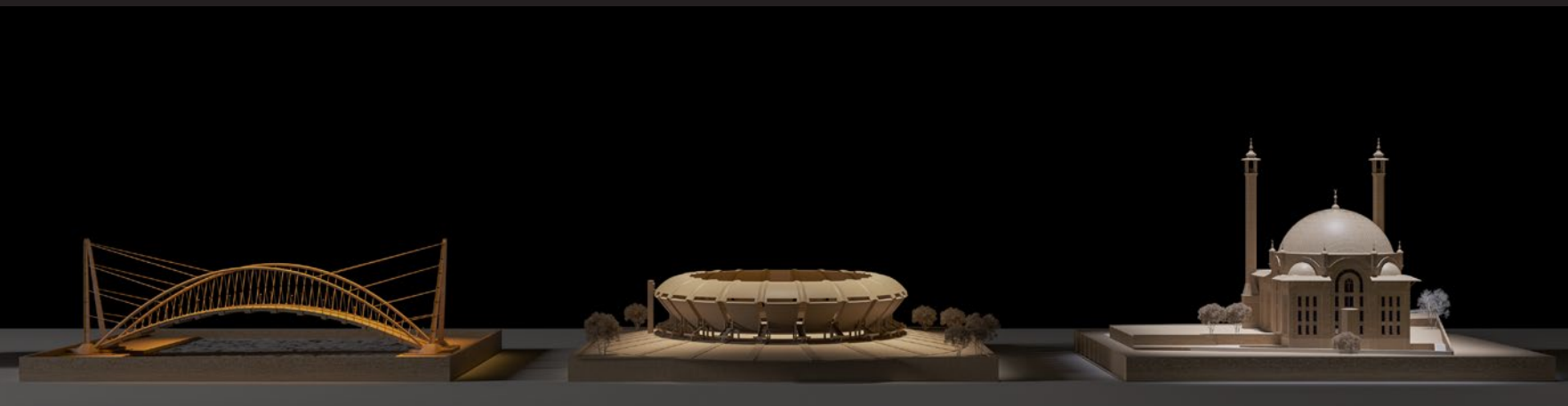


DIAMANTE LIGHTING



24

Company profile

Our history

Diamante Lighting was founded in 2009 from the union of several entrepreneurs who had already been working in the outdoor lighting sector for more than 20 years. The company's assets are to be found in the valuable background resulting from previous work experience and the insatiable desire to continue giving voice to their ideas in a process of continuous innovation. Our name **DIAMANTE LIGHTING** encapsulates our company philosophy: to create with meticulousness and technical expertise only unique products, like precious diamonds, capable of lasting over time. We design and manufacture high quality LED lighting fixtures in Italy, conceived to guarantee reliability and excellent performance even in the harshest climatic conditions. Our activity mainly concerns the outdoor architectural sector and architainment but our flexibility allows us to operate in any other field where LEDs find application. We are motivated by our passion for finding new lighting solutions and the enormous satisfaction that comes from the realization of prestigious international projects.

We work alongside light designers, architects, installers and end customers to find lighting solutions that enhance each site. We develop ad hoc solutions like tailor-made suits, with great attention to detail that makes each product unique and special.

Research and development

01

Research is at the heart of our technical activity: in the last decade, the lighting industry has been turned upside down with the introduction of LEDs and has been evolving at an extremely fast pace ever since. Our team of experts is constantly updated on emerging technologies and analyses market trends and customer needs. We adopt technological improvements after thorough investigation and testing to make sure we only offer our customers state-of-the-art and reliable products.

Certifications

02

Diamante Lighting is ISO 9001 certified: all our processes, from design to marketing, are implemented with a focus on quality and supported by an integrated management system.

Made in Italy

03

We want to honor our customers' trust by taking care of manufacturing each single product, even in the smallest details. All components are chosen from the best on the market and all processing, assembly and testing are done in our Italian factory. We focus on customization and quick delivery. We have established strong relationships with major suppliers to be fast, reliable and impeccable.



Design and engineering

04

Our technical team includes:

- Graphic designers and lighting engineers
- Mechanical engineers
- Optical engineers
- Electronics engineers
- Laboratory technicians

Production

05

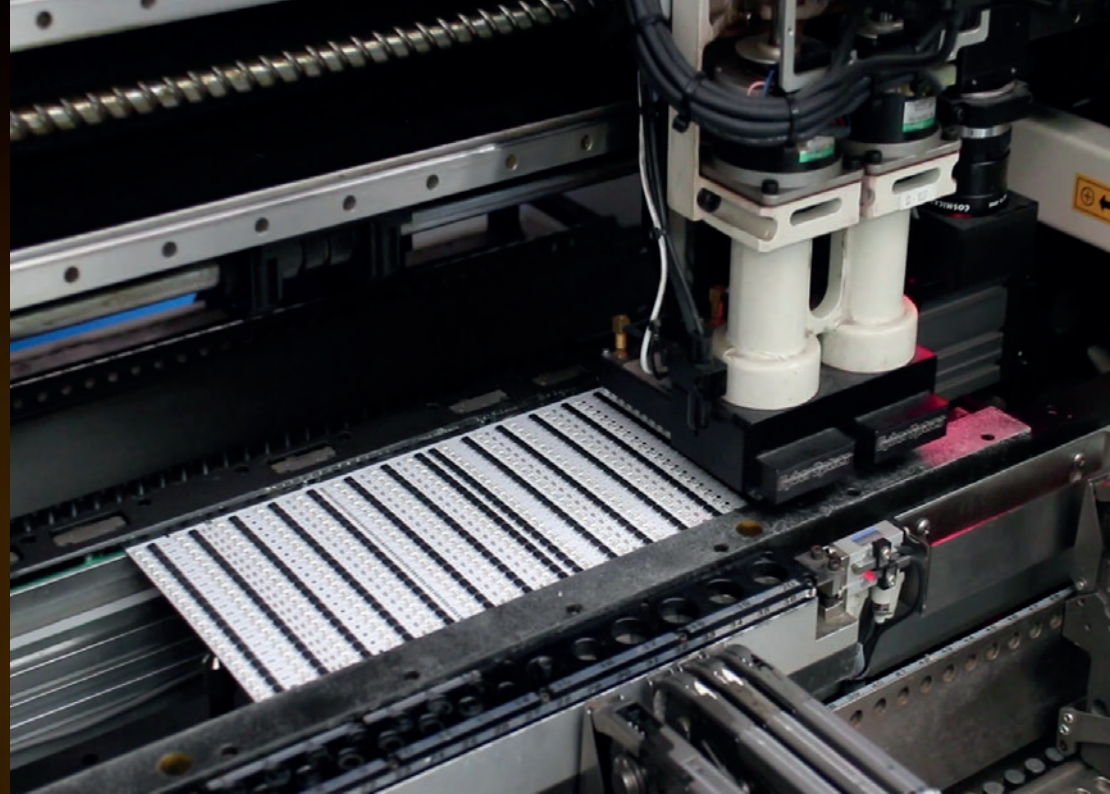
Our production department allows us to be competitive and precise on both large orders and small customized production batches. Our company is equipped with a mechanical workshop, electronics assembly plants, machines for deposition and dosing of resins or adhesives.

Test Equipment

06

Quality is guaranteed by a strong 100 per cent control of components at various stages along the production process according to strict standard procedures. We design and manufacture our own test equipment.





Mission

To be a reliable partner in the production and marketing of lighting products on an international scale, thanks to a high level of service, modularity of products and customization of solutions, while respecting the values of socially responsible business. Our vocation is to be a reliable partner in projects, from the development of the lighting concept to the final commissioning phase and after-sales service.

Values

Innovation

We constantly renew products, organization, processes and technologies.

Respect

We operate with respect for the environment; we protect people's health and ideas.

Teamwork

We work together to satisfy customers and achieve shared goals.

Ethics

We maintain fair behaviour towards all our stakeholders.

Sobriety

We allocate resources in accordance with sustainability policies, avoiding waste.



REFERENCES

SOME OF OUR



Fontana di Trevi

Rome - Italy

In collaboration with Acea



Ponte Vittorio Emanuele II

Rome - Italy

In collaboration with Acea



Basilica di San Pietro

Rome - Italy
In collaboration with ACEA





Terme di Caracalla

Rome - Italy
In collaboration with Acea



Foro Romano

Rome - Italy

In collaboration with Acea



Palatino

Rome - Italy
In collaboration with Acea



Campidoglio

Rome - Italy
In collaboration with Acea



Piazza della Repubblica

Rome - Italy

In collaboration with Acea

Santa Maria in Trastevere

Rome - Italy
In collaboration with Acea





Università Lumsa

Rome - Italy

In collaboration with MAMA Design

Piazza del Popolo

Rome - Italy
In collaboration with Acea





Piramide Porta San Paolo

Rome - Italy

In collaboration with Acea

Trinità dei Monti

Rome - Italy
In collaboration with ACEA



Ponte Sant' Angelo

Rome - Italy
In collaboration with Acea



Ponte Sisto

Rome - Italy
In collaboration with Acea





Castello di Santa Severa

Rome - Italy
In collaboration with Acea

AL Rayyan Stadium - 2022 World Cup

Doha - Qatar

In collaboration with Pattern Architects – London, UK





Savoy Automobile Museum

Georgia - Atlanta - USA



Sharjah Mosque

Sharjah - UAE
In collaboration with Ligth Concept LLC



Sharjah Mosque

Sharjah - UAE
In collaboration with Ligth Concept LLC



Hudayriyat

Adu Dhabi - UAE

In collaboration with Light Concept LLC



Souq AL Jubail Al Dhaid

Sharjah - UAE
In collaboration with RD Lighting



Four Season Hotel

Amman - Jordan

In collaboration with RD Lighting

Waldorf Astoria Hotel

Ras Al Khaimah, UAE
In collaboration with FEMC FZCO





Sparkle Towers

Dubai Marina - UAE
In collaboration with Tanas Khoury

Ajib

Amman - Jordan

In collaboration with DHA Designs London





Mercury City Tower

Moscow - Russia

In collaboration with Illuminator group

Garden Ring

Moscow - Russia
In collaboration with Illuminator Group





Apple Store

Milan - Italy

In collaboration with Watercube





History Museum - Red Square

Moscow - Russia

In collaboration with Illuminator Group

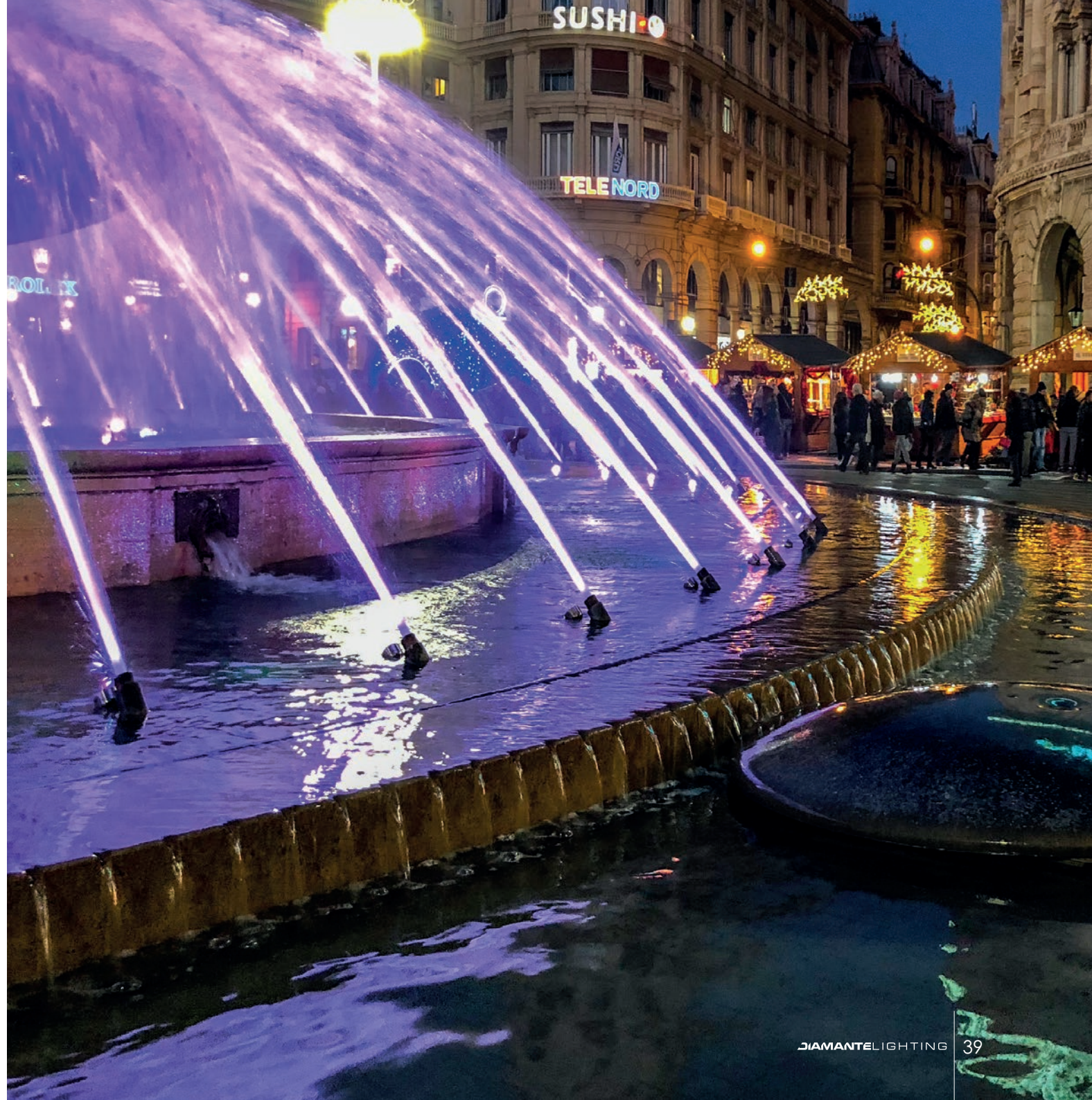


Praga Restaurant - Boulevard

Boulevard Ring Moscow - Russia
In collaboration with Illuminator Group

Fontana di piazza De Ferrari

Genova - Italy
In collaboration with Aster





Alexander the Great fountain

Skopje - Macedonia
In collaboration with Watercube



Fontana Vulcano Buono

Nola - Italy
In collaboration with Watercube

Fontana dello Zodiaco

Rome - Italy
In collaboration with ACEA



Cascade del Varone

Trento - Italy
In collaboration with Daniele Canuti





Basilica della Ghiara

Reggio Emilia - Italy
In collaboration with Daniele Canuti



La Bourse Metro Station

Brussels - Belgium
In collaboration with Barbara Hediger

Centre Mannaie

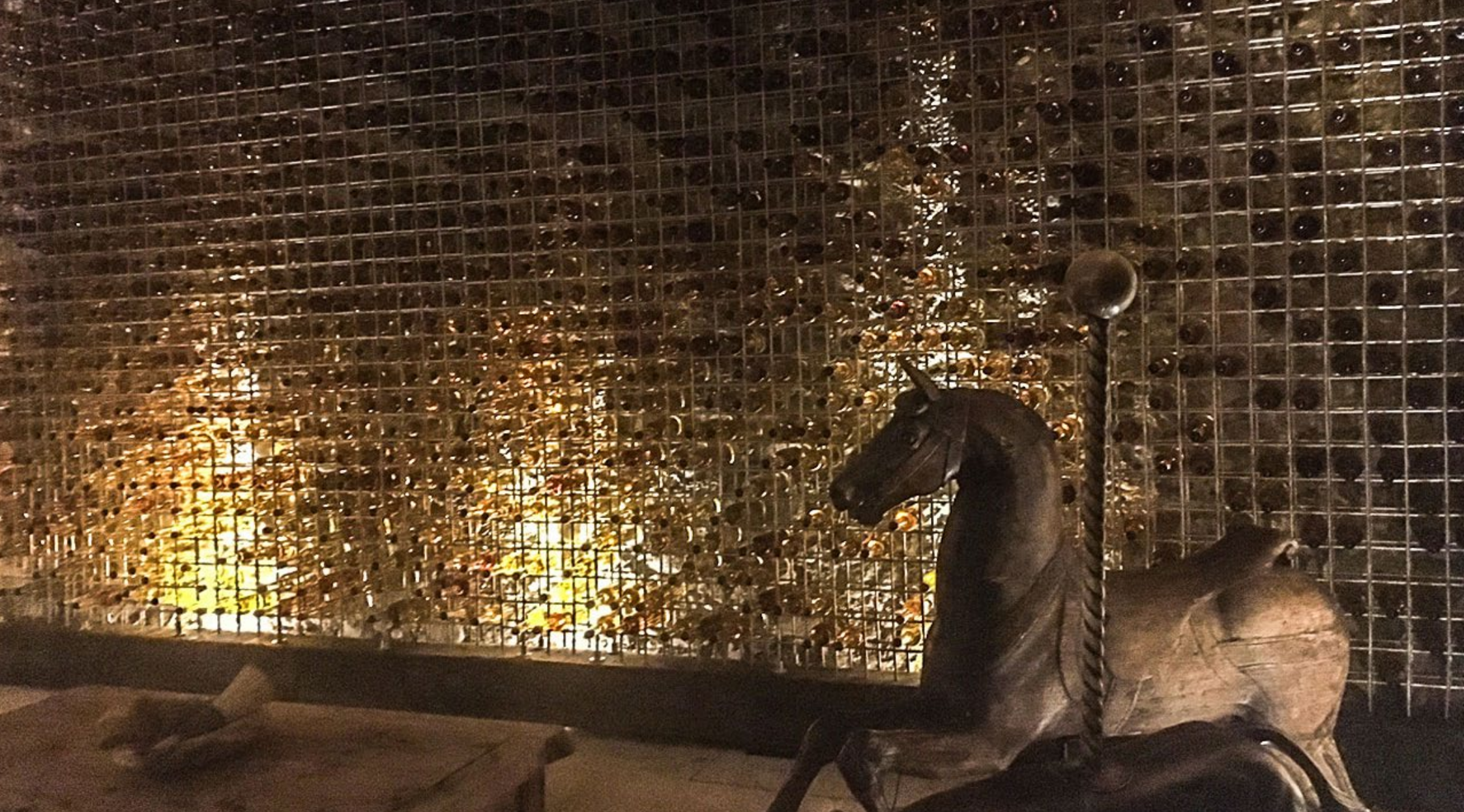
Brussels - Belgium
In collaboration with Barbara Hediger





Axa building

Waterloo - Belgium
In collaboration with Barbara Hediger



El Barreno

Ciudad De Mexico - Mexico
In collaboration with Light Control



Passerelle Saucy bridge

Liège - Belgium

In collaboration with Barbara Hediger



Castello di Brescia

Brescia - Italy
In collaboration with A2A



Mudec

Milan - Italy

In collaboration with Toshiba



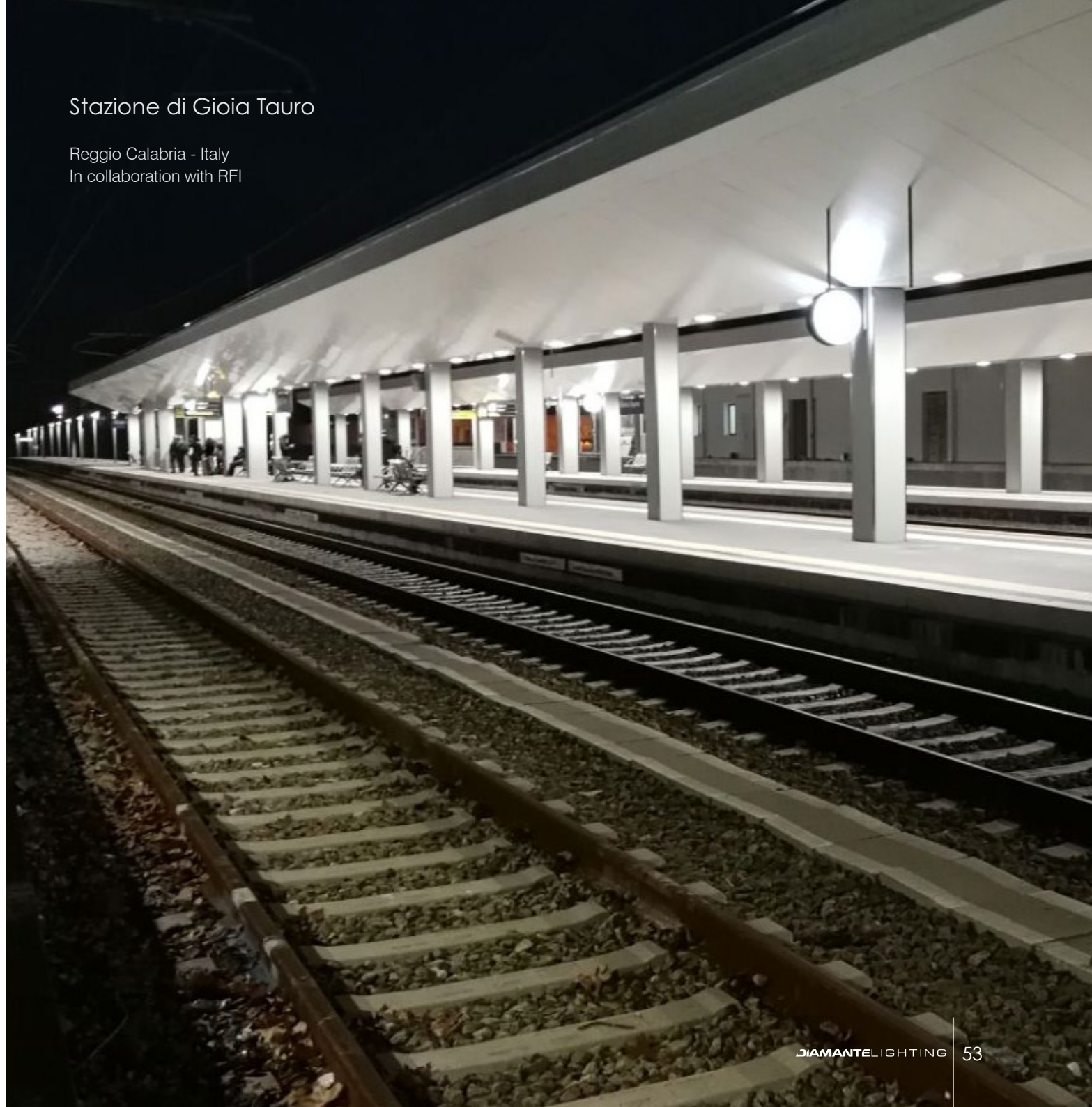
Rione Terra

Naples - Italy
In collaboration with InArPRO



Stazione di Gioia Tauro

Reggio Calabria - Italy
In collaboration with RFI



St. George Cathedral

Beirut, Lebanon
In collaboration with Debbas





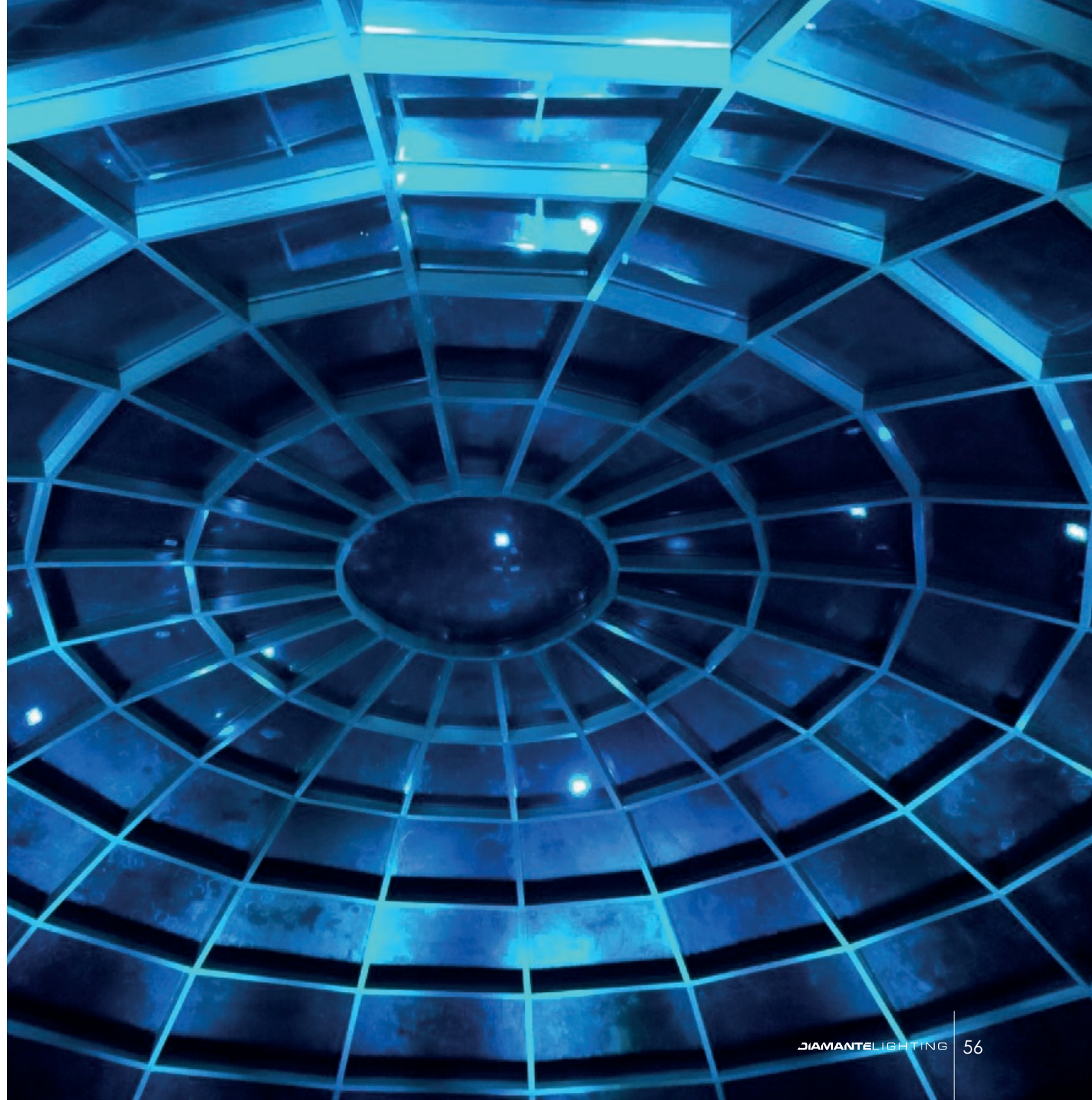
89 Mall

Kuwait City, Kuwait
In collaboration with TGS

Arabia Mall

Kuwait City - Kuwait

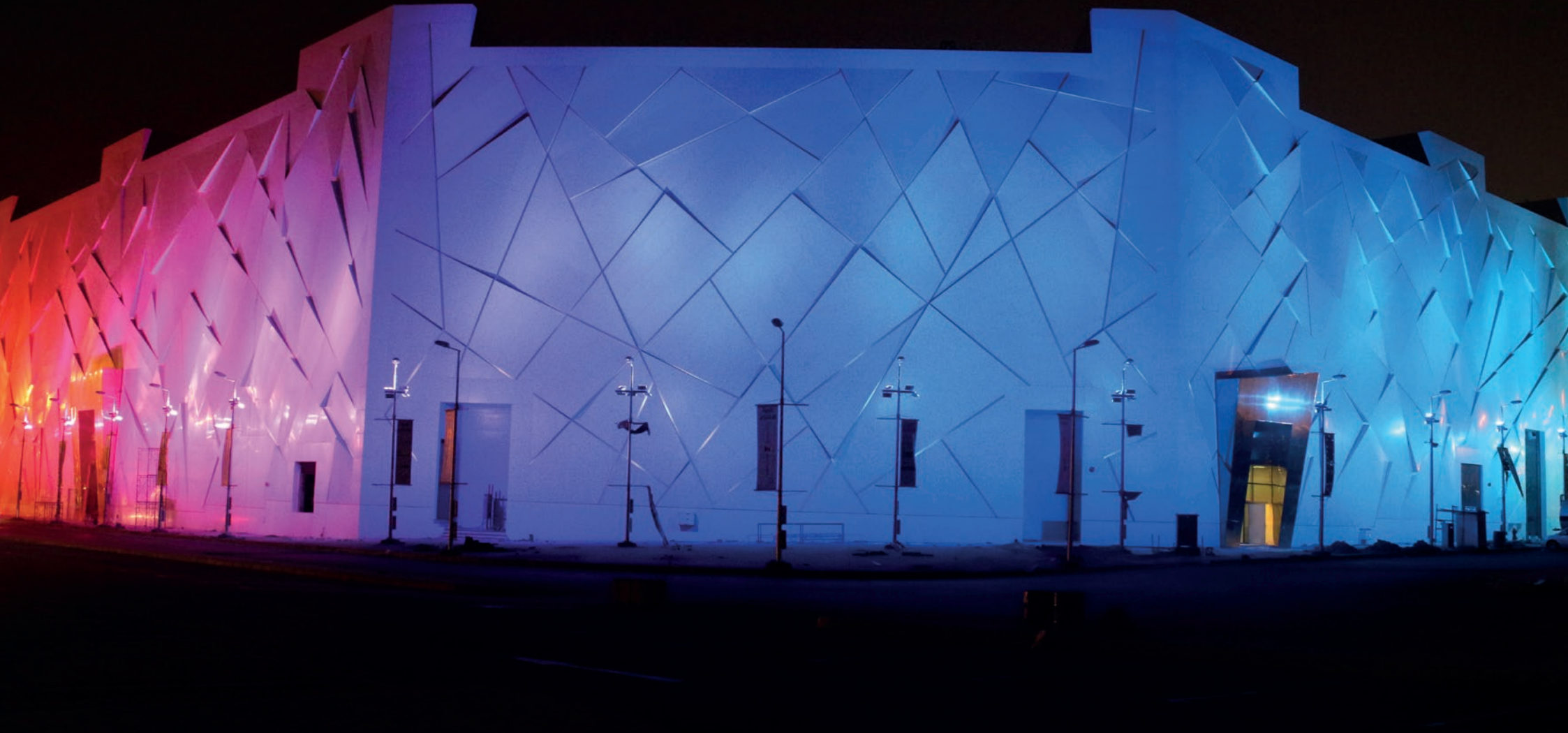
In collaboration with TGS Technical Establishment for
Building General Contracting





Le Royal Hotel

Amman - Jordan
In collaboration with Diamante Lighting ME



Sama Mall

Kuwait City - Kuwait

In collaboration with TGS Technical Establishment for Building General Contracting



Rectangular Stadium

Melburne - Australia

In collaboration with Spacecannon Australia

Kurilpa bridge

Brisbane - Australia

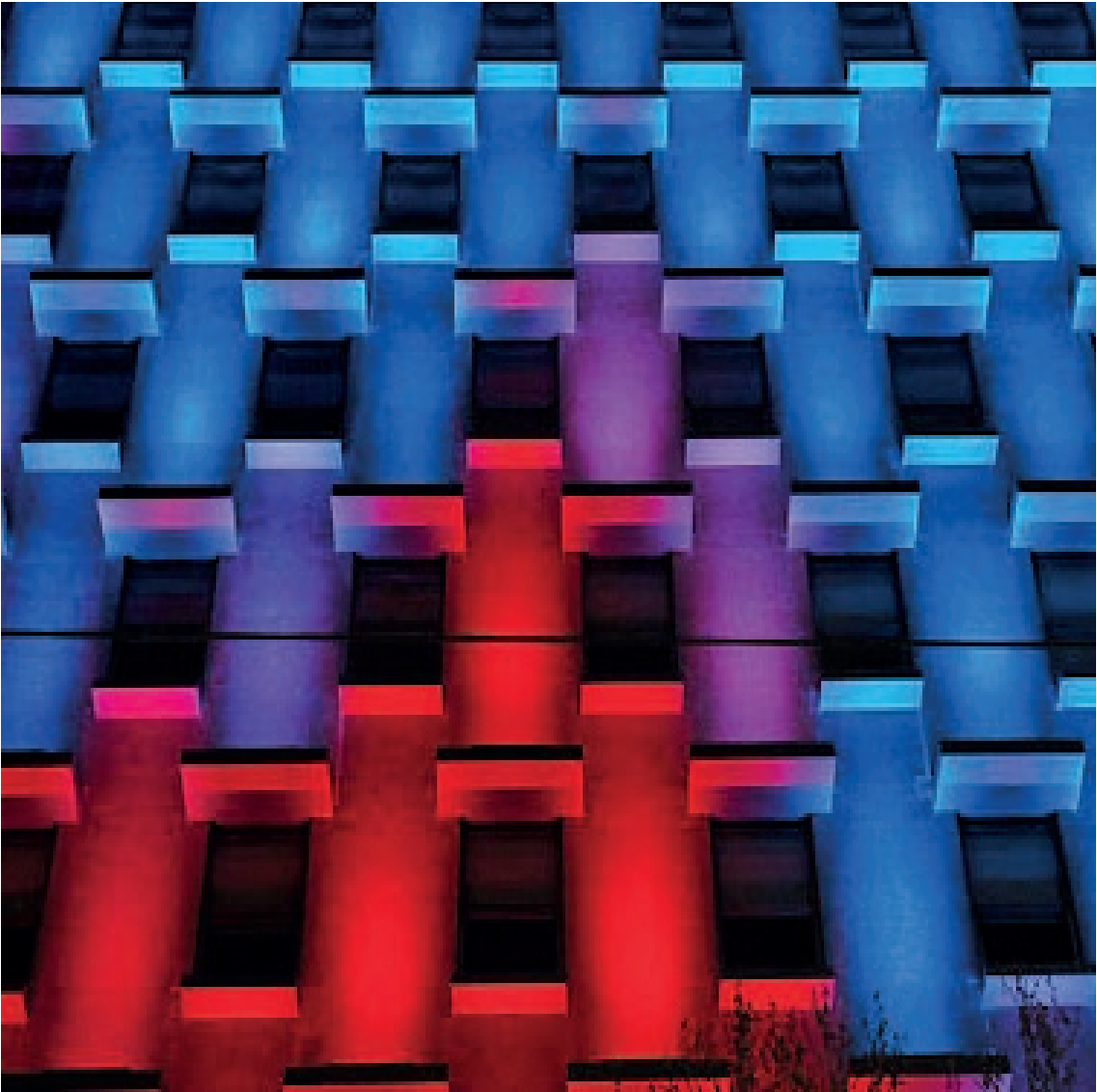
In collaboration with Spacecannon Australia

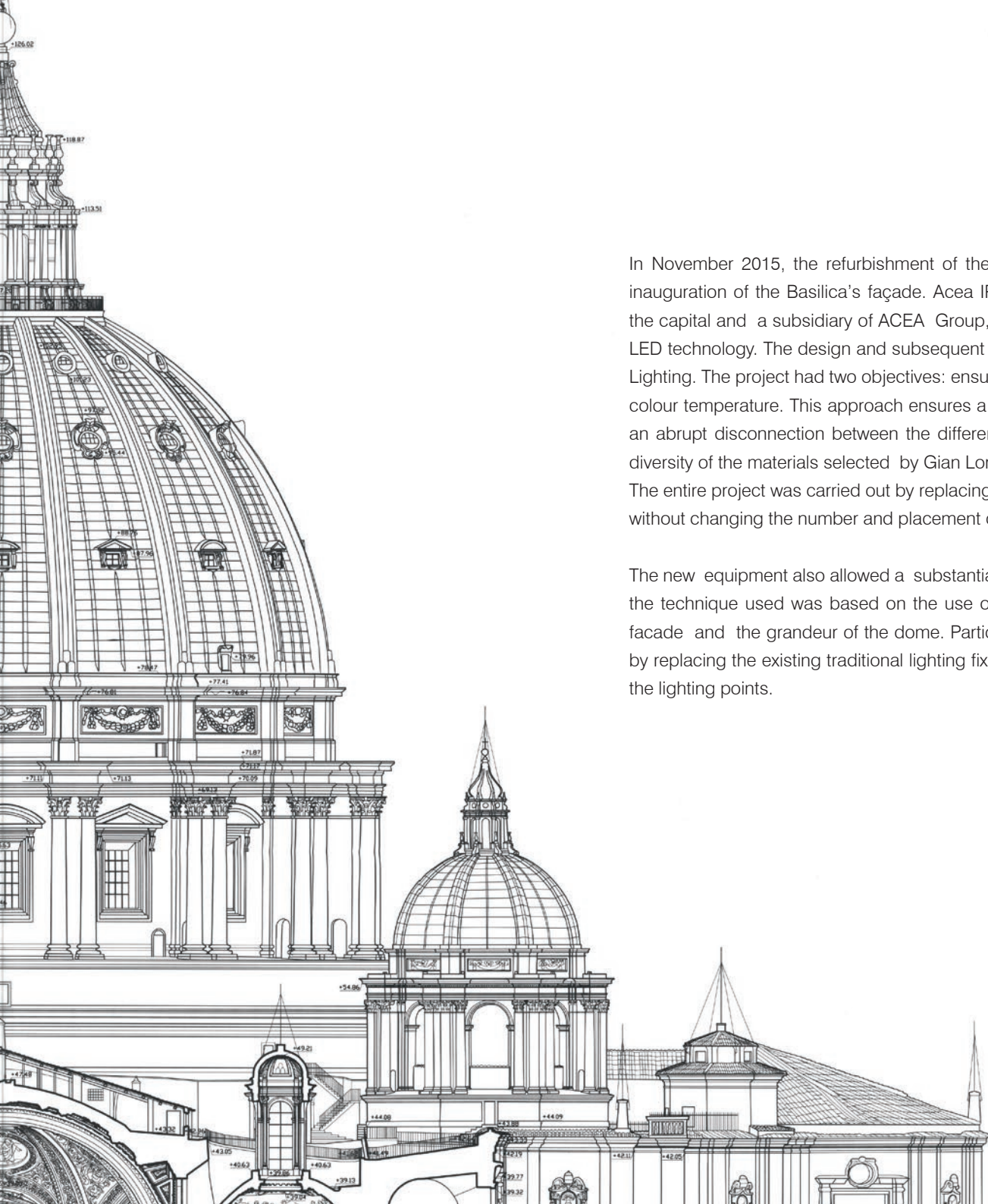


Royal Mail House

Melburne - Australia

In collaboration with Spacecannon Australia





LED lighting for St. Peter's Basilica

In November 2015, the refurbishment of the lighting system of the Basilica of St. Peter in Rome ended with the inauguration of the Basilica's façade. Acea IP (Public Lighting), an Italian multi-utility company operating mainly in the capital and a subsidiary of ACEA Group, promoted this initiative with the aim to take advantage of all benefits of LED technology. The design and subsequent implementation was organized by Acea IP in partnership with Diamante Lighting. The project had two objectives: ensuring a more efficient illumination and attaining the homogenization of the colour temperature. This approach ensures a correct perception of the volumes and spaces of the Basilica, avoiding an abrupt disconnection between the different architectural elements, including those necessary to emphasize the diversity of the materials selected by Gian Lorenzo Bernini in the 17th century.

The entire project was carried out by replacing the existing traditional lighting appliances with Diamante's LED fixtures, without changing the number and placement of the lighting devices.

The new equipment also allowed a substantial energy saving of 70% compared to the previous solution. Furthermore the technique used was based on the use of only two colour temperatures which enhances the three-dimensional facade and the grandeur of the dome. Particular attention was paid to the perspectival techniques used by Bernini. by replacing the existing traditional lighting fixtures with LED fixtures, without changing any number and placement of the lighting points.



IN HONOREM PRINCIPIS APOST PAVLVS V BVRGHESIVS ROMANVS PONT MAX AN MDC XII PONT



All this was made possible through Diamante Lighting's know how, which designed and provided custom lenses and reflectors on Acea IP's request. 340 LED appliances were used for the illumination of the facade, the dome, the cupolas and the statues of the Main Altar and Bernini's Baldachin. The project lasted approximately two months including the production and the complete installation of the equipment; a record time considering the complexity of the project. To ensure effective work and meet deadlines, "rope operators" were involved whose technique enabled us to carry out the installation in otherwise inaccessible places.



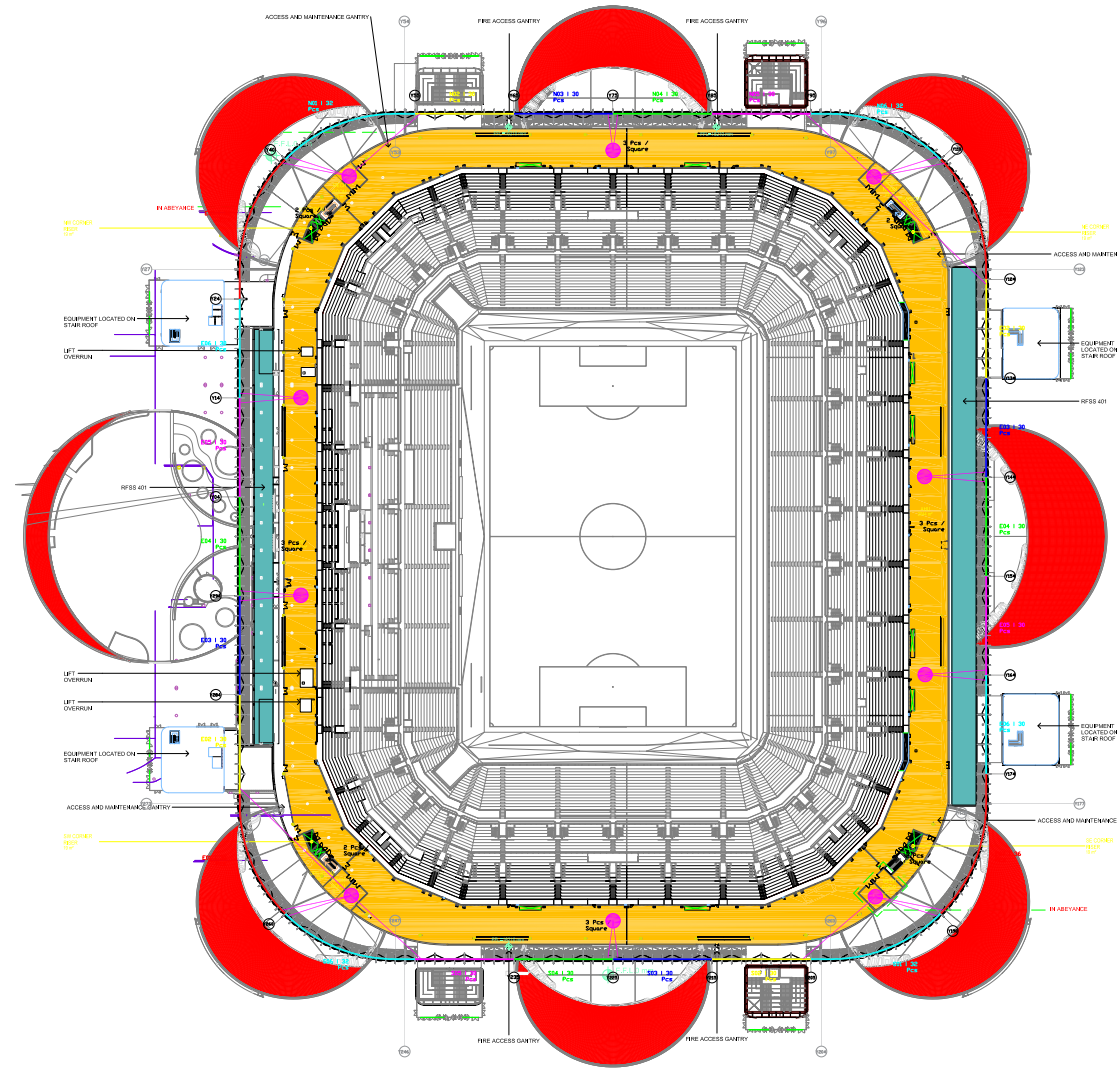
Stunning light effects at the Al-Rayyan FC Stadium - Qatar

The Al-Rayyan FC Stadium is one of several sports facilities designed and built to host the 2022 world football cup in Doha – Qatar. Diamante Lighting has secured the order for 5.871 special fixtures (Intensa and Plain) to illuminate the external walls of the stadium with stunning effects on the amazing architecture. The fixtures are controlled through our proprietary DHSLC software engineered to manage large installations.



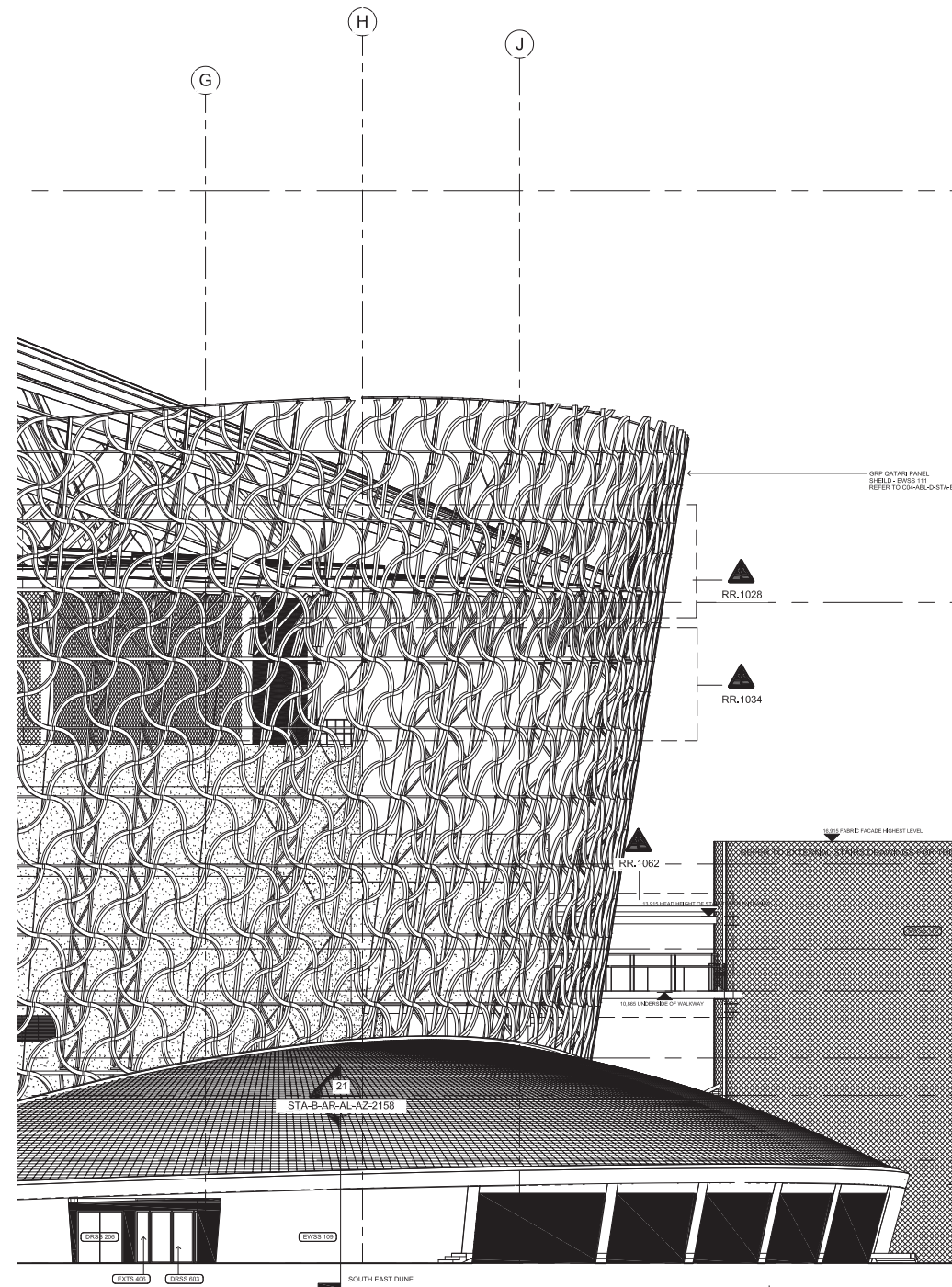
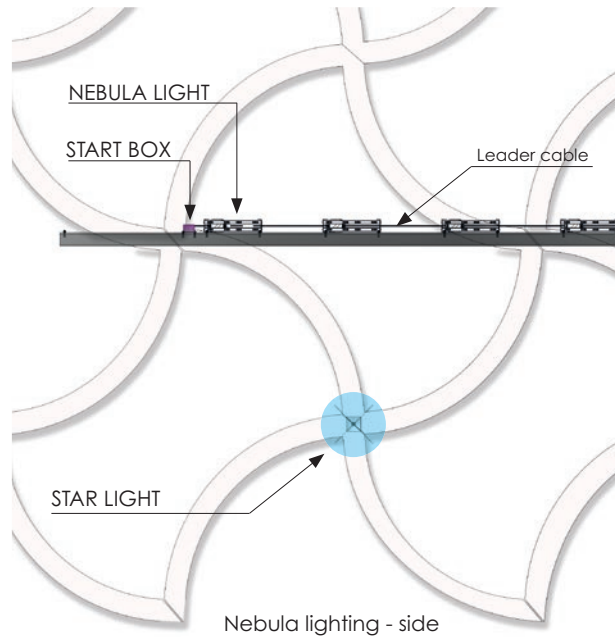
FIFA DEPARTMENT / USER GROUP

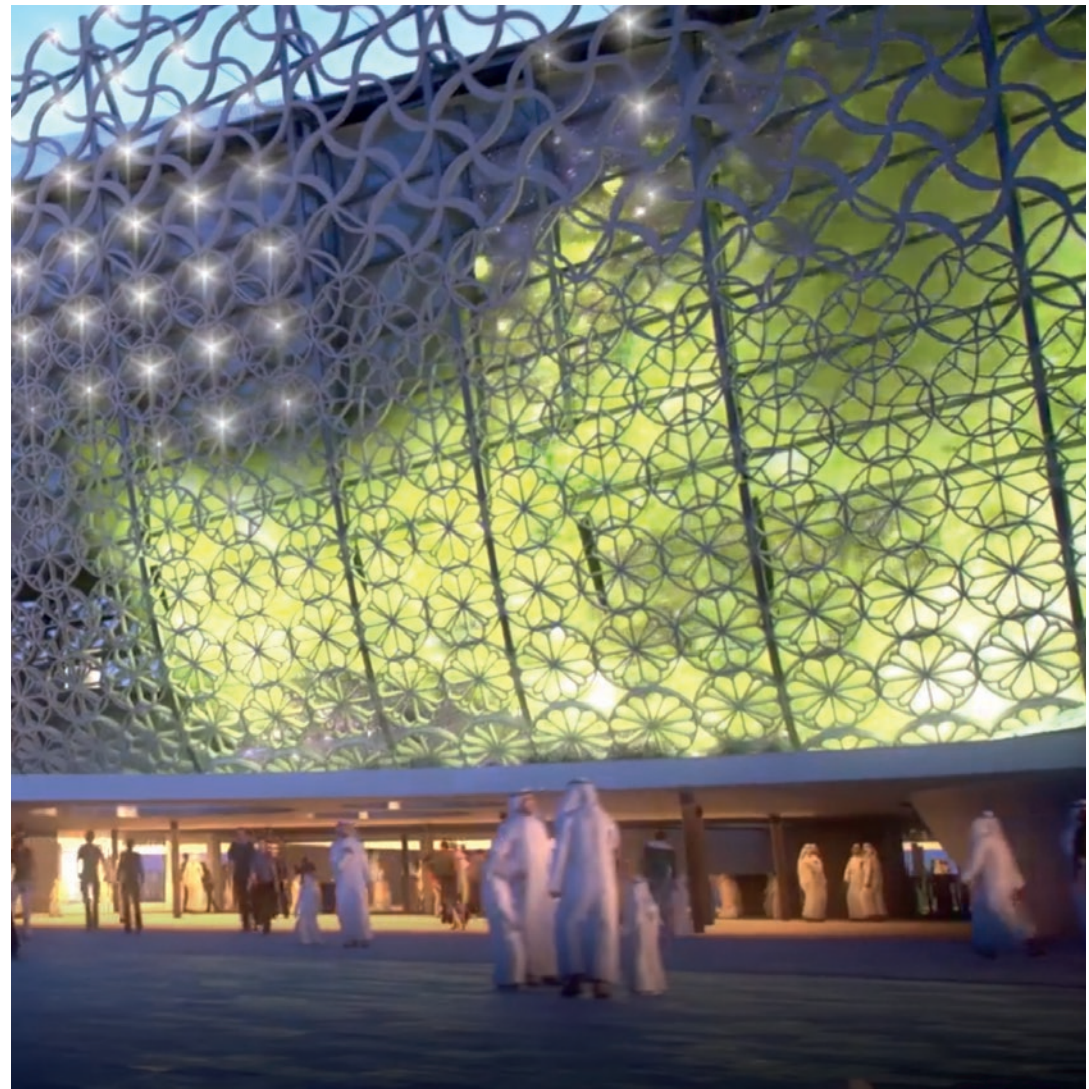
- COMPETITION / TEAMS
- BROADCAST
- MEDIA
- VIP
- VVIP
- ORGANISATION (FIFA / LOC)
- HOSPITALITY
- MARKETING
- SAFETY AND SECURITY
- SPECTATORS AND PUBLIC
- SPECTATORS AND PUBLIC - EXTERNAL AREAS
- SERVICES
- PRAYER ROOM
- HELP/INFORMATION POINT
- WC
- STAIR CORE
- AREAS NOT ASSIGNED (ALL OTHER AREAS)





The outer walls of the Al Rayyan stadium are encompassed by an arabesque veil that lends the huge building lightness and elegance. The walls are illuminated by special Intensa fixtures mounted internally on the veil. They provide a wall washing effect that reveals the arabesque by contrast. Special Plain devices are mounted externally in the intersections of the the arabesque motif to create a « flashing » effect of white light dots against a colour background. Both Intensa and Plain create dynamic, amazing light scenes controlled by Diamante's proprietary DHSLC software.





Plain Led-point

Plain was designed especially for this project to provide a sharp, neutral white light spot. The body, including an efficient heat sink, is in aluminium alloy. Plain and Intensa are managed by a single control unit. Plain is rated IP 67.

1434 Plain were mounted.



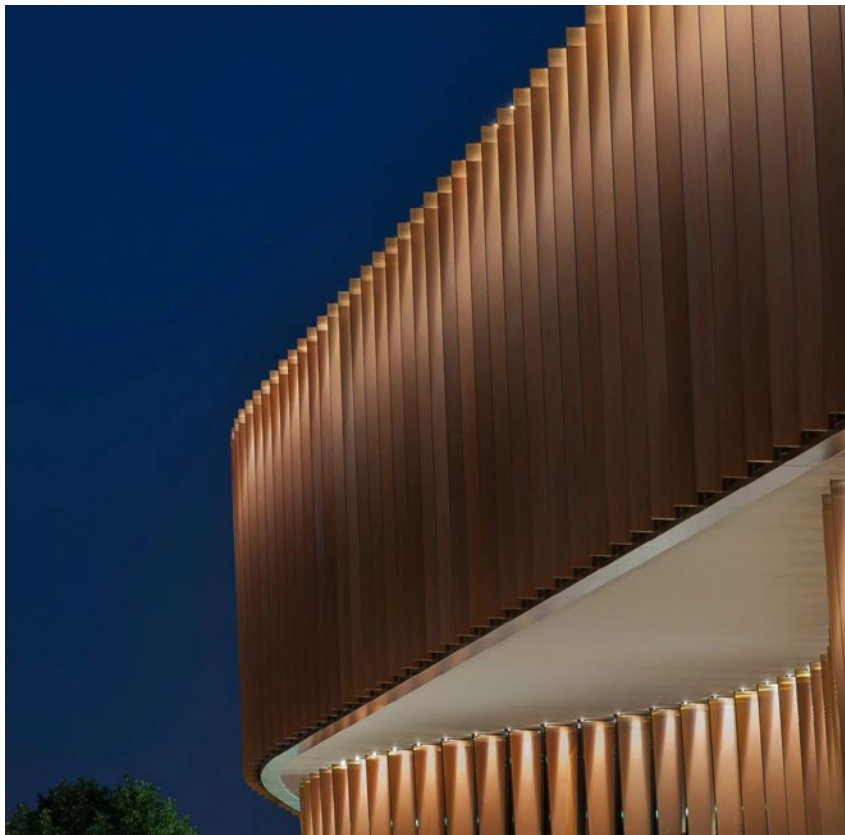
Intensa 500 RGB Double

Intensa (IP 66 and 67) is a standard RGB Diamante fixture in a special double configuration. Both modules are orientable; each module is separately controlled through DHSLC, Diamante's self-addressing software. The two modules have different light beams and are driven by remote power supply units. Altogether 4437 double units were installed.



Facade Lighting Design National Bank - Kuwait

- The tower design concept originated from a pearl shell, an object highly symbolic in Kuwait's history and heritage, culture and economy.
- The main construction comprises composite concrete and steel.
- The cladding on the fins and glass façades is predominantly glass reinforced concrete.
- The purpose of the façade lighting is to show the beauty of building's detail and landmark in night time.
- The design concept is to illuminate the GRC fins using hidden indirect lights.
- Using the RGB LED technology with DMX control will provide too many options of the façade lighting styles.



Lighting Control System

Lighting Fixture Intensa 1500 RGB



Low output wall washing and general illumination. Specification-grade modular system featuring high power LEDs. Modules lengths of 500, 1000 and 1500 mm. Four high-precision beam angles. Wide choice of outputs, color temperatures, color-mixings. Remote power supply unit. Control through remote gear.

Using The Elliptical Horizontal Narrow Beam will provide excellent control and restriction of light direction.

This will prevent light to go inside the building through the glass curtain wall façade between the fins. Having the best efficiency of lighting.

The e:cue Lighting Application Suite is a collection of software applications used to program the most creative lighting designs.

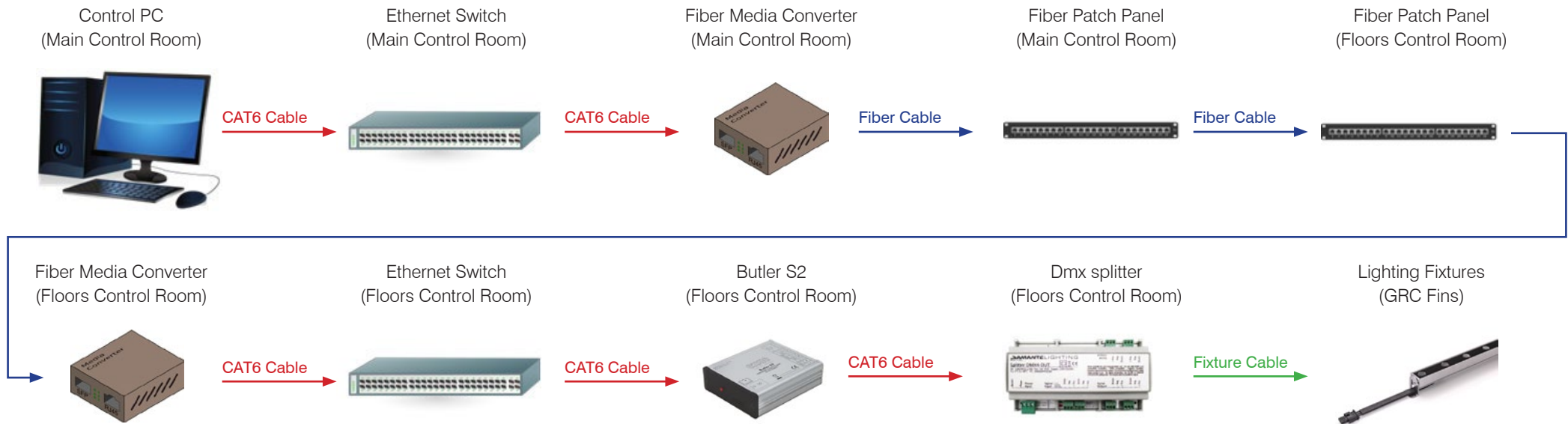
The Lighting Application Suite includes innovative and intuitive tools to design simple to complex lighting and video shows, position lighting fixtures in a project plan, and configure e:cue and external devices in the control system.

In addition to that, you can also program special lighting effects, video-to-light pixel mapping, visualization of the lighting installation, and special triggering and automation features.

Features:

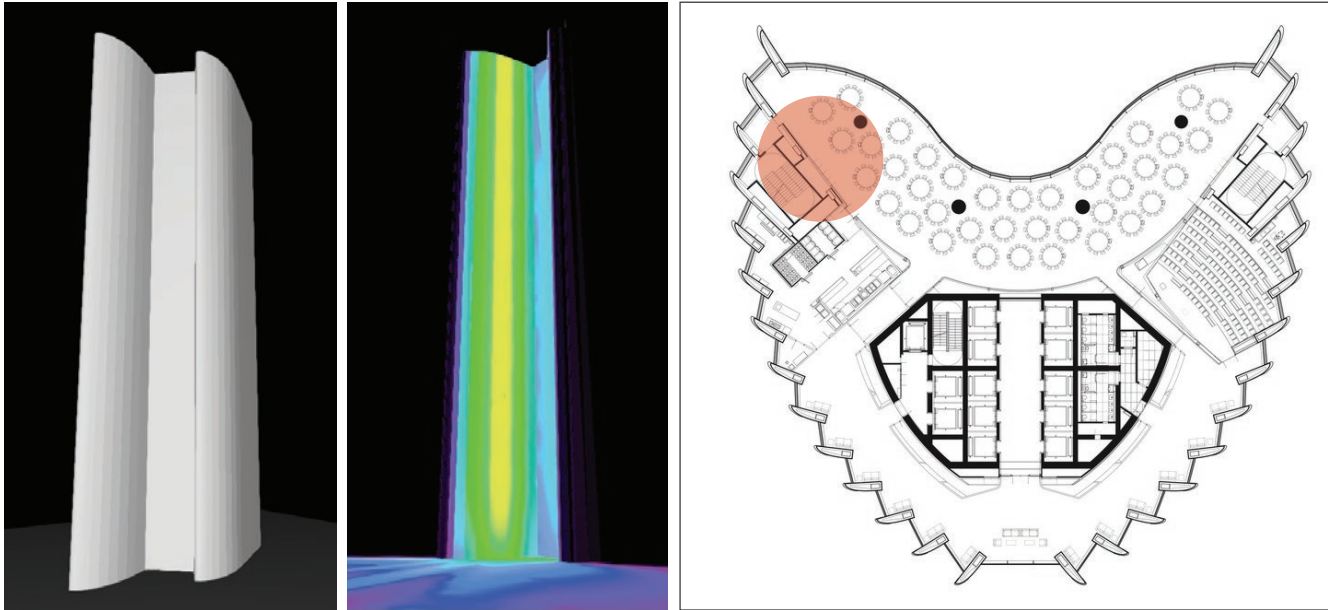
- Program precision timing of lighting scenes.
- Preview lighting projects with Imagine.
- Arrange lighting fixtures in your project plan intuitively.
- Advanced Remote Device Management,
- Create complex shows with multiple videos, graphics and moving text with Emotion FX.
- Organize and group fixtures.
- Create animations using Wizards.
- Program time and date triggers.
- Control large numbers of DMX512/RDM channels and pixels.

Lighting Control Schematic

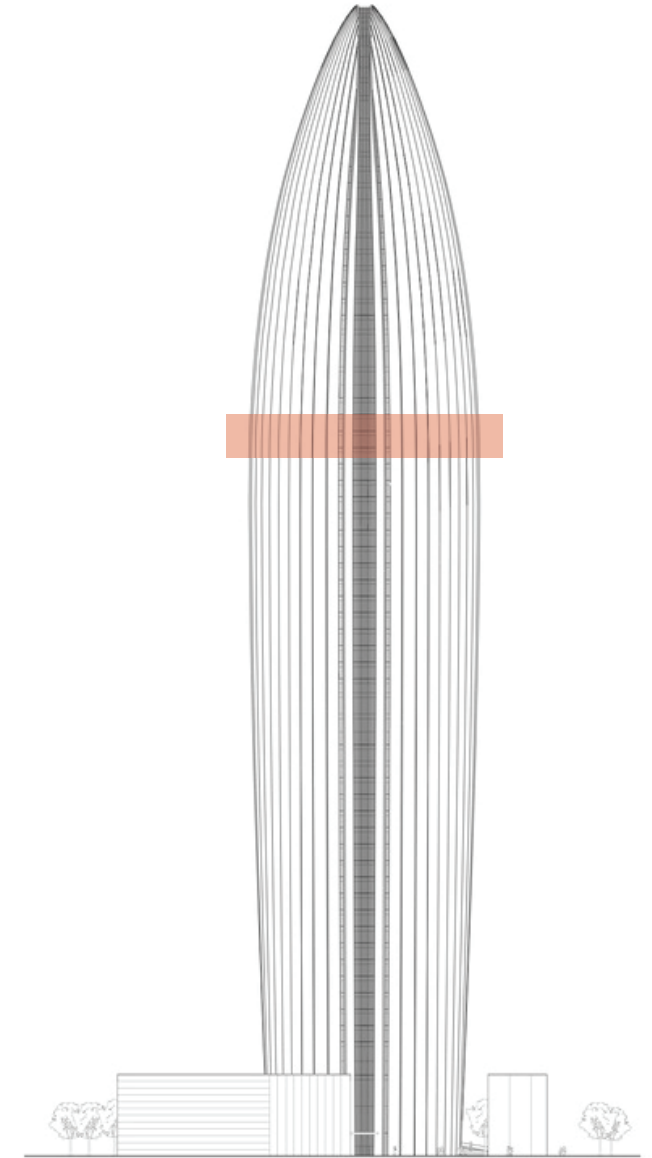
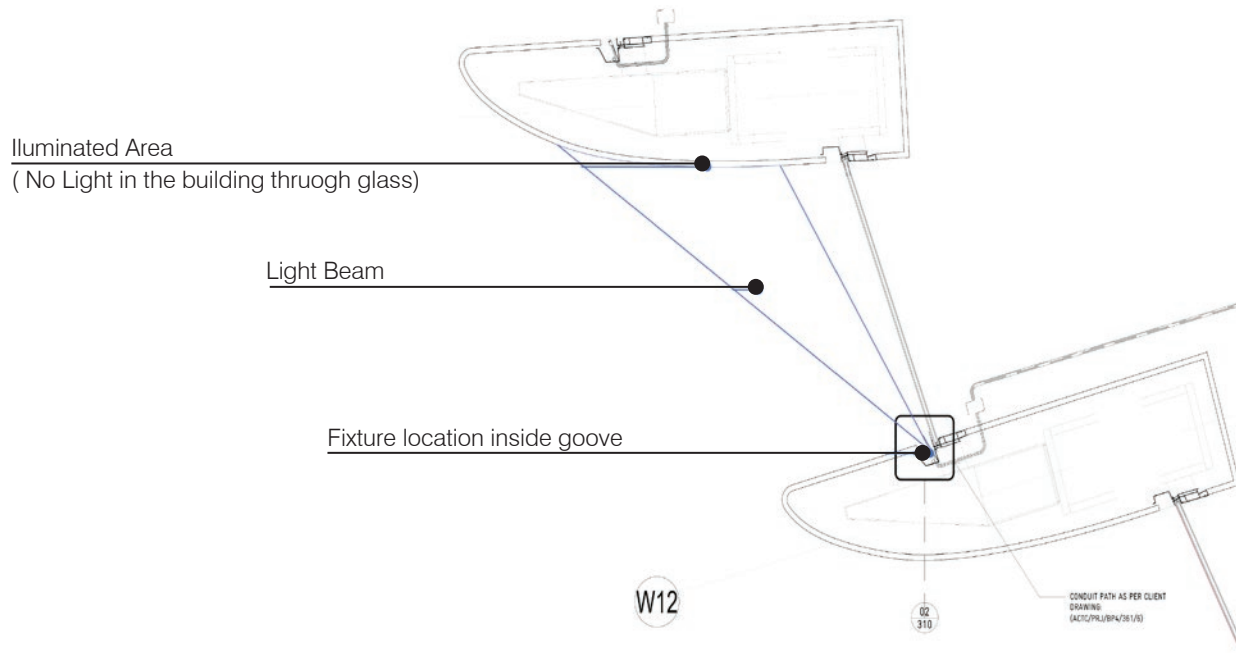


Lighting Simulation

Taking a fin as a sample, and applying DIALux simulation.

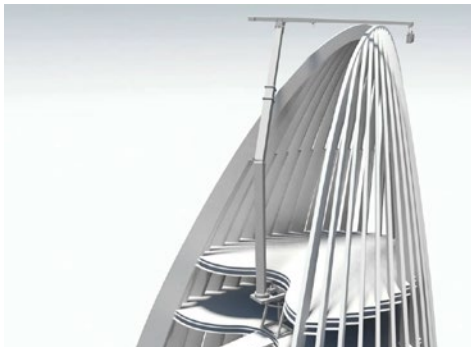
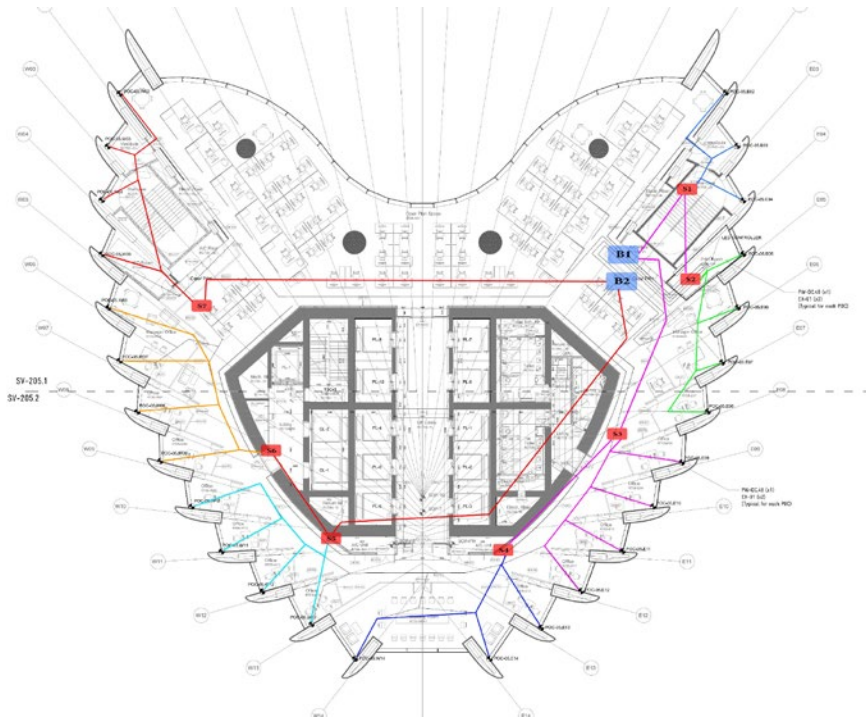


Top Sectional view of one fin



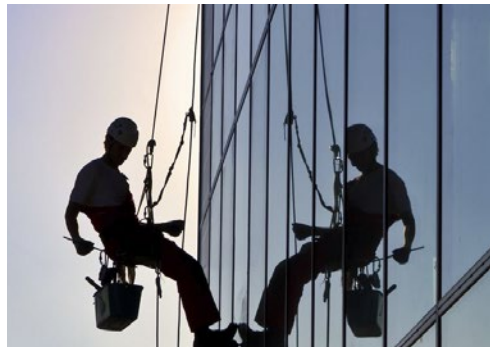
Installation & Methodology

- The System is divided into 6 Levels for both Power and Data.
- Each level is connected with the other by fiber optics cables, and the components of each level is connected by CAT6 cables.



Building BMU:

- The NBK Tower has the heaviest and most complex BMU in the world.
- It can be used for the installation process.



Spider Method:

- For some areas which can't be reached by the BMU, Spider method can be used.

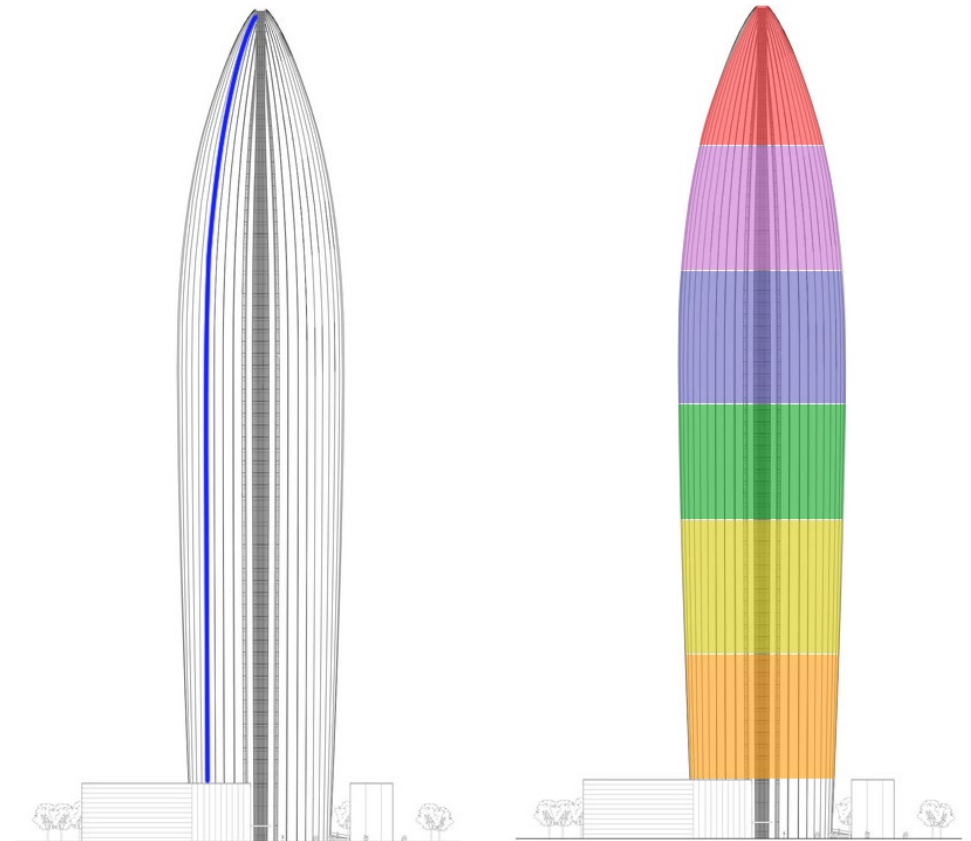
Fixtures Installation

Checking & Mock-up:

- The first step is to check the validity of the old system connections and cables and mutual components.
- After that some samples will be installed to verify the system compatibility. And confirm the effect.

Installation process:

- Installation process will be level by level, Starting from level 1 and operate the sub-system.
- During the installation process of level 1, another process of installation will start of an entire vertical fin and operate the fin.



Design Rendering







